

QUAIL FOREVER IN ARKANSAS

By RYAN PARKER

ARKANSAS STATE COORDINATOR



Our Mission:

To conserve pheasants, quail, and other wildlife through habitat improvements, public access, education, and conservation advocacy.



Our Vision:

Pheasants forever and Quail Forever endeavor to create a North American landscape of quality habitat supporting wild, sustainable populations of upland game birds and other wildlife that are accessible to generations of hunters and conservationists.



Our Careers:

State Coordinator

Regional Chapter Representative

Monarch and Pollinator Coordinator

Prescribed Fire Coordinator

Outreach Coordinator

Farm Bill Biologist

Grasslands Monitoring Coordinator

Grasslands Grazing Coordinator

Outcomes Assessment Technician

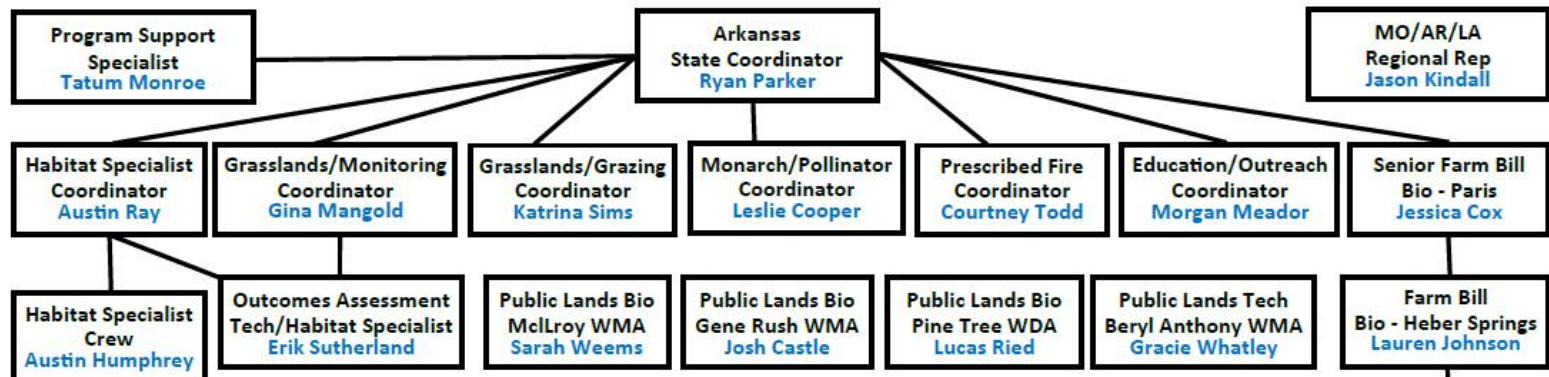
Habitat 'Burn Crew' Specialist

Public Lands Wildlife Biologist

Program Support Specialist



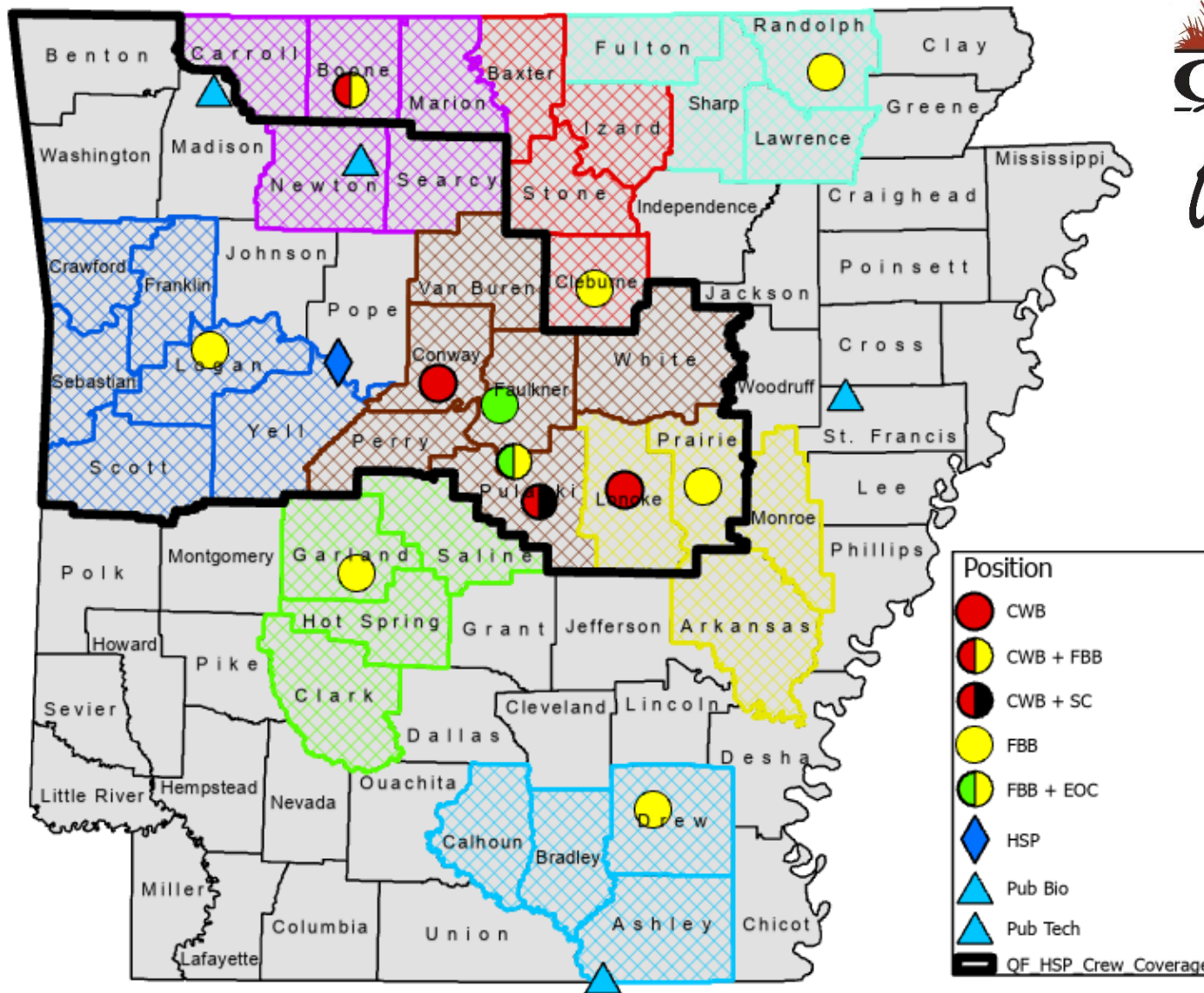
Our Structure



Quail Forever Staff in Arkansas



Our Coverage



Our Partners



**Natural Resources
Conservation Service**



The Road To Habitat: Federal Farm Bill Programs



Environmental Quality Incentives Program

EQIP

Conservation Stewardship Program

CSP

Conservation Reserve Program

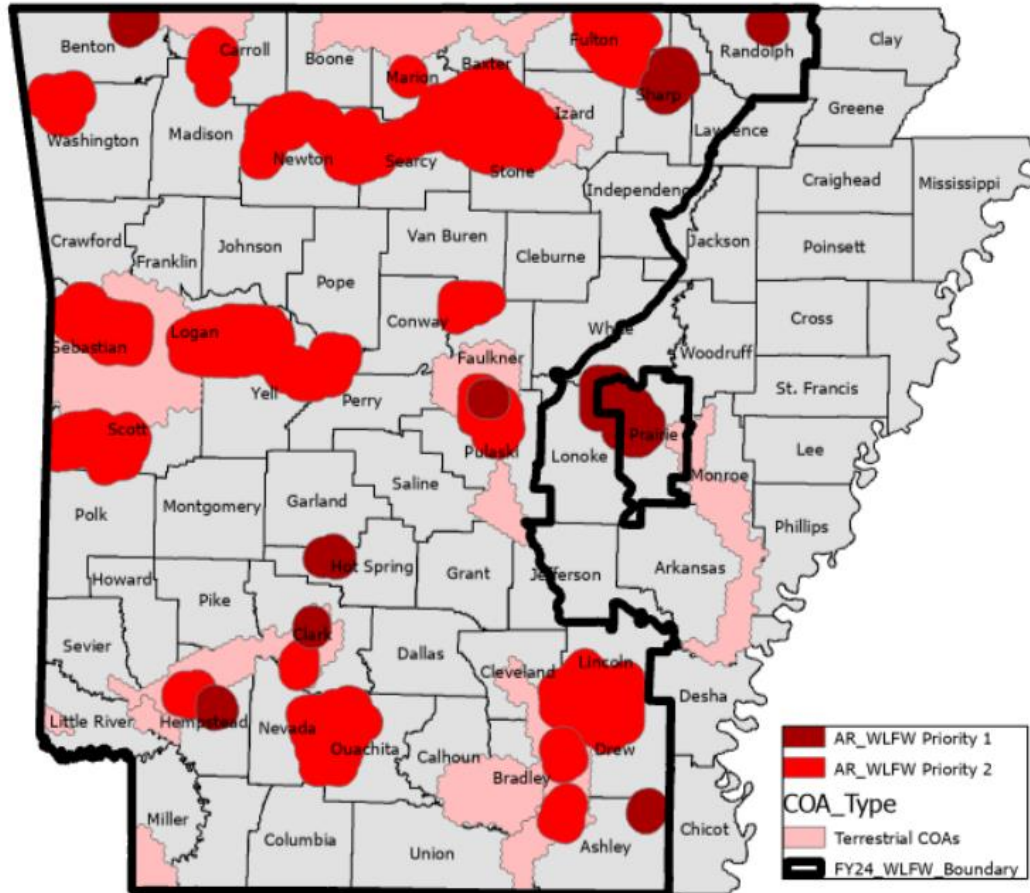
CRP



Working Lands For Wildlife



Arkansas WLFW Priority Zones and Conservation Opportunity Areas



RESTORING UPLAND HABITAT IN ARKANSAS' GRAND PRAIRIE



AROUND ONE PERCENT OF THE HISTORIC GRAND PRAIRIE STILL REMAINS

By Gilbert Randolph

The Holmes farm, located in Prairie County Arkansas has been in the family for over 100 years and it sits in a quail focal area and right on the border of Arkansas' Grand Prairie. This area, which is now better known for its extensive conversion to commercial rice production and waterfowl hunting was once 400,000 acres of prairie, grassland savannas and bayous. Around one percent of the original prairie remains, but Jake Holmes is restoring upland habitat on his property while maintaining agricultural production.

Regional Conservation Partnership Program (RCPP)



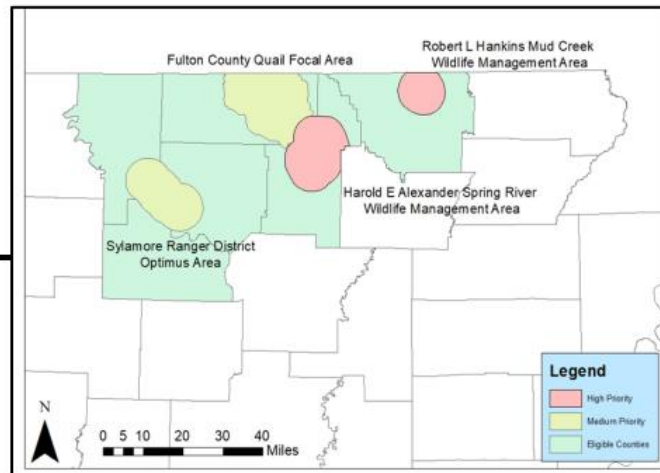
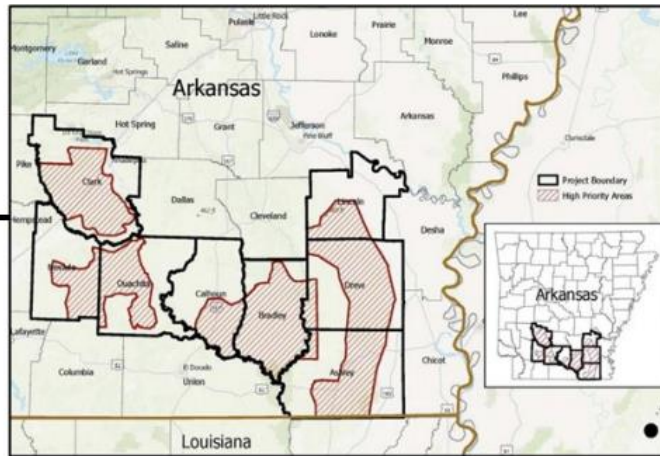
Open Pine RCPP – Awarded to American Bird Conservancy

Quail Forever is a contributing partner and serves as a liaison between ABC, NRCS, and the landowner for project delivery and implementation.

Quail Forever in Arkansas will continue to support RCPP efforts in the state, to include partnering as a project contributor and providing field-level technical assistance. QF in AR will support current RCPP project renewals and expansions, and will support other partner-led RCPP project efforts where mission overlaps.

North AR Quail RCPP – Awarded to Arkansas Game & Fish Commission

Quail Forever is a contributing partner and serves as a liaison between AGFC, NRCS, and the landowner for project delivery and implementation.



The Road To Habitat: State Incentive Programs



ATTENTION ARKANSAS LANDOWNERS!

Arkansas Game and Fish Commission's

CONSERVATION INCENTIVE PROGRAM

is now live and accepting on-line applications at:
<https://www.agfc.com/education/conservation-incentive-program/>



Farm Bill Biologists

- ✓ Enroll Landowners into State and Federal Conservation Programs
- ✓ Write Detailed Habitat Management Plans
- ✓ Complete NRCS Planning Process that Includes Ranking and Contract Building
- ✓ Conduct Quail, Songbird, and Vegetation Monitoring
- ✓ Conduct Outreach Workshops
- ✓ Work Closely with ALL Stakeholders



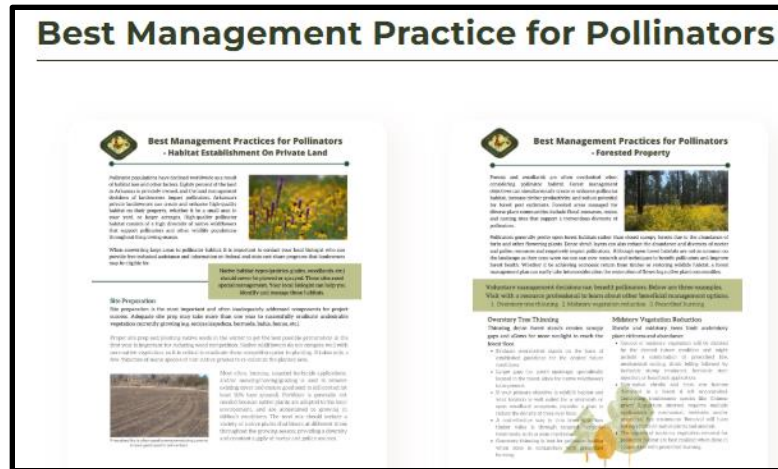
AR Monarch and Pollinator Coordinator



- ✓ Lead the Arkansas Monarch Conservation Partnership – A Group of Over 40 Partners
- ✓ Provide Training to Landowners and Stakeholders on Pollinator Plantings and Conservation
- ✓ Create Collaborative Outreach Content, Flyers, and Pollinator BMP Sheets
- ✓ Serve as a Liaison Between Stakeholders on State and National Level for QF



AR Monarch Conservation Partnership

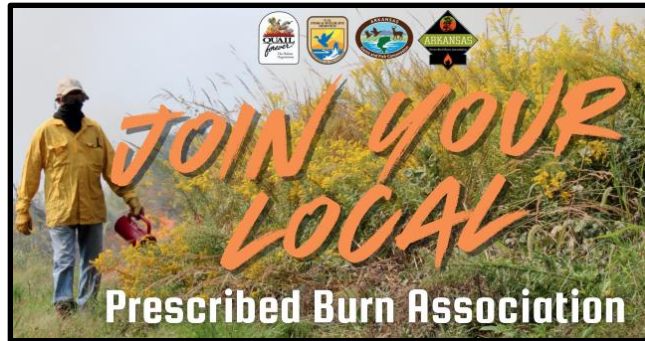


AR Prescribed Fire Coordinator



- ✓ Offer Leadership and Provide Training alongside Arkansas Prescribed Burn Association to Local PBAs
- ✓ Serve as QF's Representative on The Arkansas Prescribed Fire Council
- ✓ Provide Fire and Fire Break Technical Assistance to the Natural Resources Conservation Service
- ✓ Conduct Outreach Workshops on Prescribed Fire to Landowners and Stakeholders





This map of Missouri illustrates the distribution of slaveholding in 1860. The counties are color-coded based on the number of slaves held, with darker colors representing higher concentrations. The map shows a high density of slaveholding in the central and eastern parts of the state, particularly in the area around St. Louis and the Missouri River valley. The western and southern parts of the state generally show lower concentrations of slaveholding.

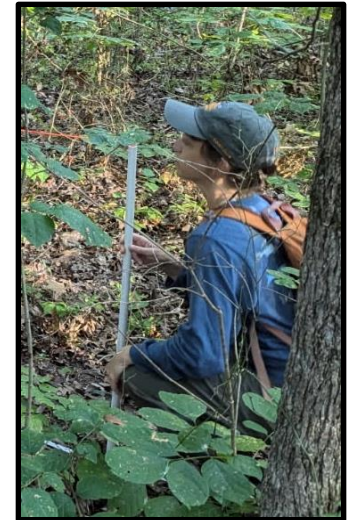
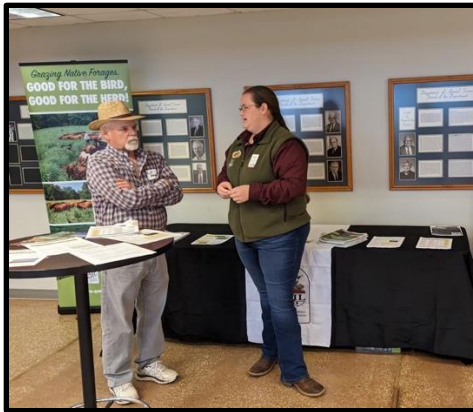
County	Color
Benton	Light Yellow
Carroll	Light Yellow
Boone	Orange
Marion	Orange
Baker	Orange
Fulton	Orange
Randolph	Orange
Greene	Light Yellow
Washington	Light Yellow
Madison	Light Yellow
Newton	Light Yellow
Searcy	Light Yellow
Stone	Light Yellow
Independence	Light Yellow
Craighead	Light Yellow
Missouri	Light Yellow
Crawford	Light Yellow
Franklin	Light Yellow
Johnson	Light Yellow
Van Buren	Light Yellow
Cass	Light Yellow
Jackson	Light Yellow
Poinsett	Light Yellow
Cross	Light Yellow
Crittenden	Light Yellow
St. Francis	Light Yellow
Lee	Light Yellow
Phillips	Light Yellow
De Kalb	Light Yellow
Chicot	Light Yellow
Ashley	Light Yellow
Drew	Light Yellow
Lincoln	Light Yellow
Cleveland	Light Yellow
Dallas	Light Yellow
Clark	Light Yellow
Hot Spring	Light Yellow
Grant	Light Yellow
Jefferson	Light Yellow
Arkansas	Light Yellow
Denha	Light Yellow
Sevier	Light Yellow
Howard	Light Yellow
Pike	Light Yellow
Montgomery	Light Yellow
Garland	Light Yellow
Saline	Light Yellow
Polk	Light Yellow
Scott	Light Yellow
Sebastian	Light Yellow
Linn	Light Yellow
Franklin	Light Yellow
Johnson	Light Yellow
Van Buren	Light Yellow
Cass	Light Yellow
Jackson	Light Yellow
Poinsett	Light Yellow
Cross	Light Yellow
Crittenden	Light Yellow
St. Francis	Light Yellow
Lee	Light Yellow
Phillips	Light Yellow
De Kalb	Light Yellow
Chicot	Light Yellow
Ashley	Light Yellow
Drew	Light Yellow
Lincoln	Light Yellow
Cleveland	Light Yellow
Dallas	Light Yellow
Clark	Light Yellow
Hot Spring	Light Yellow
Grant	Light Yellow
Jefferson	Light Yellow
Arkansas	Light Yellow
Denha	Light Yellow
Sevier	Light Yellow
Howard	Light Yellow
Pike	Light Yellow
Montgomery	Light Yellow
Garland	Light Yellow
Saline	Light Yellow
Polk	Light Yellow
Scott	Light Yellow
Sebastian	Light Yellow
Linn	Light Yellow
Franklin	Light Yellow
Johnson	Light Yellow
Van Buren	Light Yellow
Cass	Light Yellow
Jackson	Light Yellow
Poinsett	Light Yellow
Cross	Light Yellow
Crittenden	Light Yellow
St. Francis	Light Yellow
Lee	Light Yellow
Phillips	Light Yellow
De Kalb	Light Yellow
Chicot	Light Yellow
Ashley	Light Yellow
Drew	Light Yellow
Lincoln	Light Yellow
Cleveland	Light Yellow
Dallas	Light Yellow
Clark	Light Yellow
Hot Spring	Light Yellow
Grant	Light Yellow
Jefferson	Light Yellow
Arkansas	Light Yellow
Denha	Light Yellow
Sevier	Light Yellow
Howard	Light Yellow
Pike	Light Yellow
Montgomery	Light Yellow
Garland	Light Yellow
Saline	Light Yellow
Polk	Light Yellow
Scott	Light Yellow
Sebastian	Light Yellow
Linn	Light Yellow
Franklin	Light Yellow
Johnson	Light Yellow
Van Buren	Light Yellow
Cass	Light Yellow
Jackson	Light Yellow
Poinsett	Light Yellow
Cross	Light Yellow
Crittenden	Light Yellow
St. Francis	Light Yellow
Lee	Light Yellow
Phillips	Light Yellow
De Kalb	Light Yellow
Chicot	Light Yellow
Ashley	Light Yellow
Drew	Light Yellow
Lincoln	Light Yellow
Cleveland	Light Yellow
Dallas	Light Yellow
Clark	Light Yellow
Hot Spring	Light Yellow
Grant	Light Yellow
Jefferson	Light Yellow
Arkansas	Light Yellow
Denha	Light Yellow
Sevier	Light Yellow
Howard	Light Yellow
Pike	Light Yellow
Montgomery	Light Yellow
Garland	Light Yellow
Saline	Light Yellow
Polk	Light Yellow
Scott	Light Yellow
Sebastian	Light Yellow
Linn	Light Yellow
Franklin	Light Yellow
Johnson	Light Yellow
Van Buren	Light Yellow
Cass	Light Yellow
Jackson	Light Yellow
Poinsett	Light Yellow
Cross	Light Yellow
Crittenden	Light Yellow
St. Francis	Light Yellow
Lee	Light Yellow
Phillips	Light Yellow
De Kalb	Light Yellow
Chicot	Light Yellow
Ashley	Light Yellow
Drew	Light Yellow
Lincoln	Light Yellow
Cleveland	Light Yellow
Dallas	Light Yellow
Clark	Light Yellow
Hot Spring	Light Yellow
Grant	Light Yellow
Jefferson	Light Yellow
Arkansas	Light Yellow
Denha	Light Yellow
Sevier	Light Yellow
Howard	Light Yellow
Pike	Light Yellow
Montgomery	Light Yellow
Garland	Light Yellow
Saline	Light Yellow
Polk	Light Yellow
Scott	Light Yellow
Sebastian	Light Yellow
Linn	Light Yellow
Franklin	Light Yellow
Johnson	Light Yellow
Van Buren	Light Yellow
Cass	Light Yellow
Jackson	Light Yellow
Poinsett	Light Yellow
Cross	Light Yellow
Crittenden	Light Yellow
St. Francis	Light Yellow
Lee	Light Yellow
Phillips	Light Yellow
De Kalb	Light Yellow
Chicot	Light Yellow
Ashley	Light Yellow
Drew	Light Yellow
Lincoln	Light Yellow
Cleveland	Light Yellow
Dallas	Light Yellow
Clark	Light Yellow
Hot Spring	Light Yellow
Grant	Light Yellow
Jefferson	Light Yellow

Cole McNair
ozarkprairiepba@gmail.com

AR Grasslands Coordinators

Grazing Coordinator

- ✓ Native Warm Season Grasses
- ✓ Sustainable Grazing Management
- ✓ 8 Million Acres of Pasture in Arkansas



Monitoring Coordinator

- ✓ Working Lands For Wildlife
- ✓ NRCS Research on Establishment
- ✓ Partnership Monitoring Efforts

Habitat Specialist 'Burn Crew'



Growing Season FY25:

Private Lands Burns Complete

* **TOTAL = 963 ac.**

Public Lands Burn Assists Complete

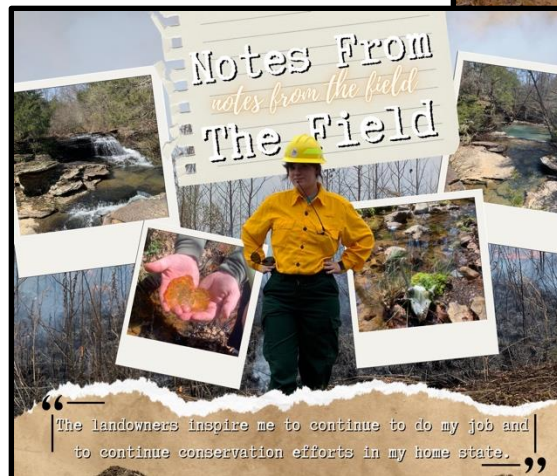
♦ AGFC

- ⇒ Stone Prairie WMA, 113 ac.
- ⇒ Gene Rush WMA, 112 ac.
- ⇒ Gulf Mountain WMA, 139 ac.
- ⇒ Presson Oglesby Preserve, 60 ac.

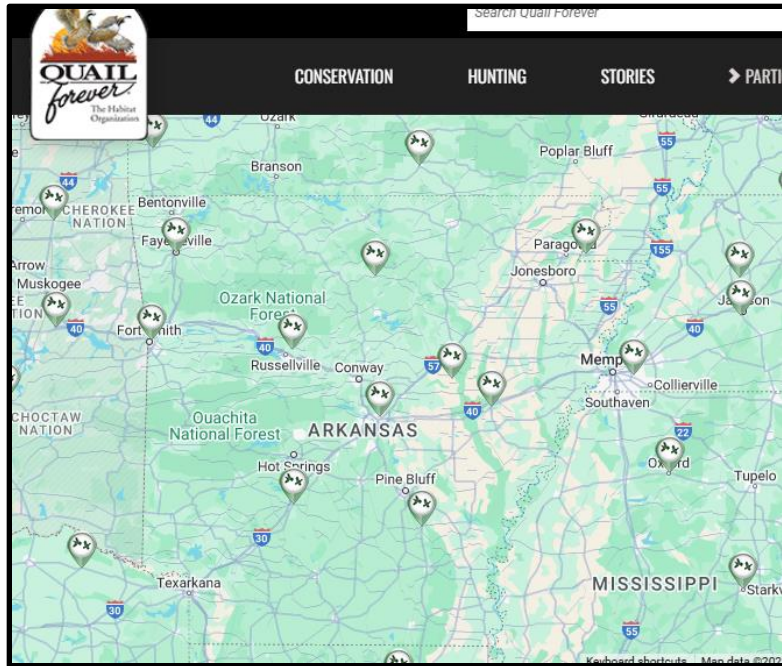
♦ **TOTAL = 364 ac.**



AR Outreach Coordinator



AR Volunteer Chapters





Metrics	FY2025 Output Goals
Permanent Protection Acres	85
Technical Assistance Acres	16,500
Restored & Enhanced Acres	30,000
Landowner Contacts	4,000
Public Access Acres	100
Outreach Events	300
Outreach Participants	4500
Membership	850